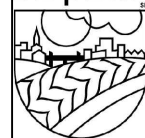


2021 Basin Updates

Page 2021_1

Basin ID	Original Area(From Master Storm Map)	Total Area Added	Total Area Subtracted	New Area
FE030	123.39AC	0.18AC	0.77AC	122.8AC
FE050	160.31AC	1.77AC	1.01AC	161.07AC
FE070	39.76AC	0.18AC	0.60AC	39.34AC
FE110	137.47AC	0.70AC	0.45AC	137.72AC

DE PERE

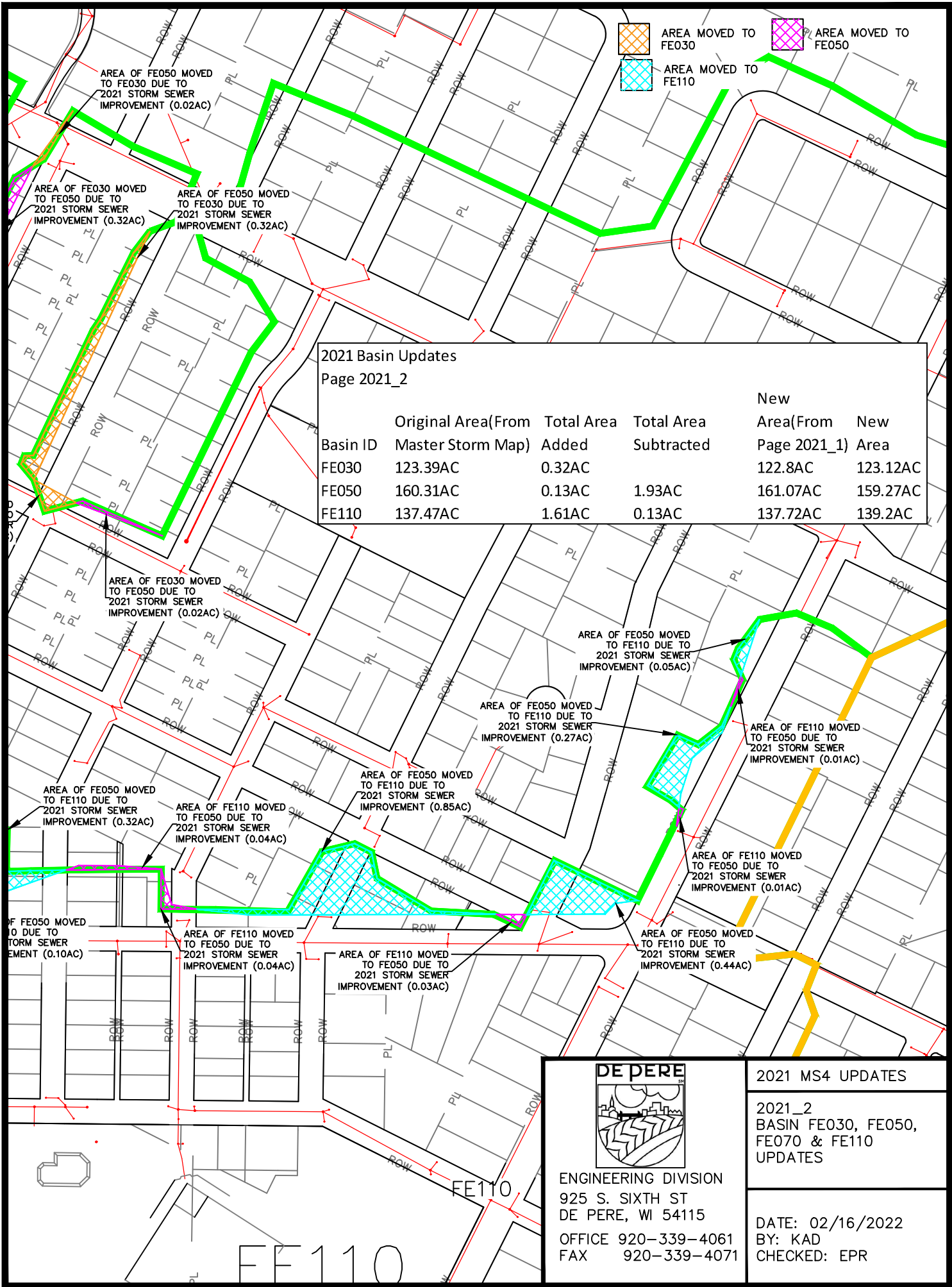




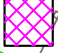
ENGINEERING DIVISION
 925 S. SIXTH ST
 DE PERE, WI 54115
 OFFICE 920-339-4061
 FAX 920-339-4071

2021 MS4 UPDATES

2021_1
 BASIN FE030, FE050,
 FE070 & FE110
 UPDATES

DATE: 02/16/2022
 BY: KAD
 CHECKED: EPR



 AREA MOVED TO FE030
 AREA MOVED TO FE110
 AREA MOVED TO FE050

2021 Basin Updates
Page 2021_2

Basin ID	Original Area(From Master Storm Map)	Total Area Added	Total Area Subtracted	New Area(From Page 2021_1)	New Area
FE030	123.39AC	0.32AC		122.8AC	123.12AC
FE050	160.31AC	0.13AC	1.93AC	161.07AC	159.27AC
FE110	137.47AC	1.61AC	0.13AC	137.72AC	139.2AC

AREA OF FE050 MOVED TO FE030 DUE TO 2021 STORM SEWER IMPROVEMENT (0.02AC)

AREA OF FE030 MOVED TO FE050 DUE TO 2021 STORM SEWER IMPROVEMENT (0.32AC)

AREA OF FE050 MOVED TO FE030 DUE TO 2021 STORM SEWER IMPROVEMENT (0.32AC)

AREA OF FE030 MOVED TO FE050 DUE TO 2021 STORM SEWER IMPROVEMENT (0.02AC)

AREA OF FE050 MOVED TO FE110 DUE TO 2021 STORM SEWER IMPROVEMENT (0.05AC)

AREA OF FE050 MOVED TO FE110 DUE TO 2021 STORM SEWER IMPROVEMENT (0.27AC)

AREA OF FE110 MOVED TO FE050 DUE TO 2021 STORM SEWER IMPROVEMENT (0.01AC)

AREA OF FE050 MOVED TO FE110 DUE TO 2021 STORM SEWER IMPROVEMENT (0.32AC)

AREA OF FE110 MOVED TO FE050 DUE TO 2021 STORM SEWER IMPROVEMENT (0.04AC)

AREA OF FE050 MOVED TO FE110 DUE TO 2021 STORM SEWER IMPROVEMENT (0.85AC)

AREA OF FE110 MOVED TO FE050 DUE TO 2021 STORM SEWER IMPROVEMENT (0.01AC)

AREA OF FE050 MOVED TO FE110 DUE TO 2021 STORM SEWER IMPROVEMENT (0.10AC)

AREA OF FE110 MOVED TO FE050 DUE TO 2021 STORM SEWER IMPROVEMENT (0.04AC)

AREA OF FE110 MOVED TO FE050 DUE TO 2021 STORM SEWER IMPROVEMENT (0.03AC)

AREA OF FE050 MOVED TO FE110 DUE TO 2021 STORM SEWER IMPROVEMENT (0.44AC)

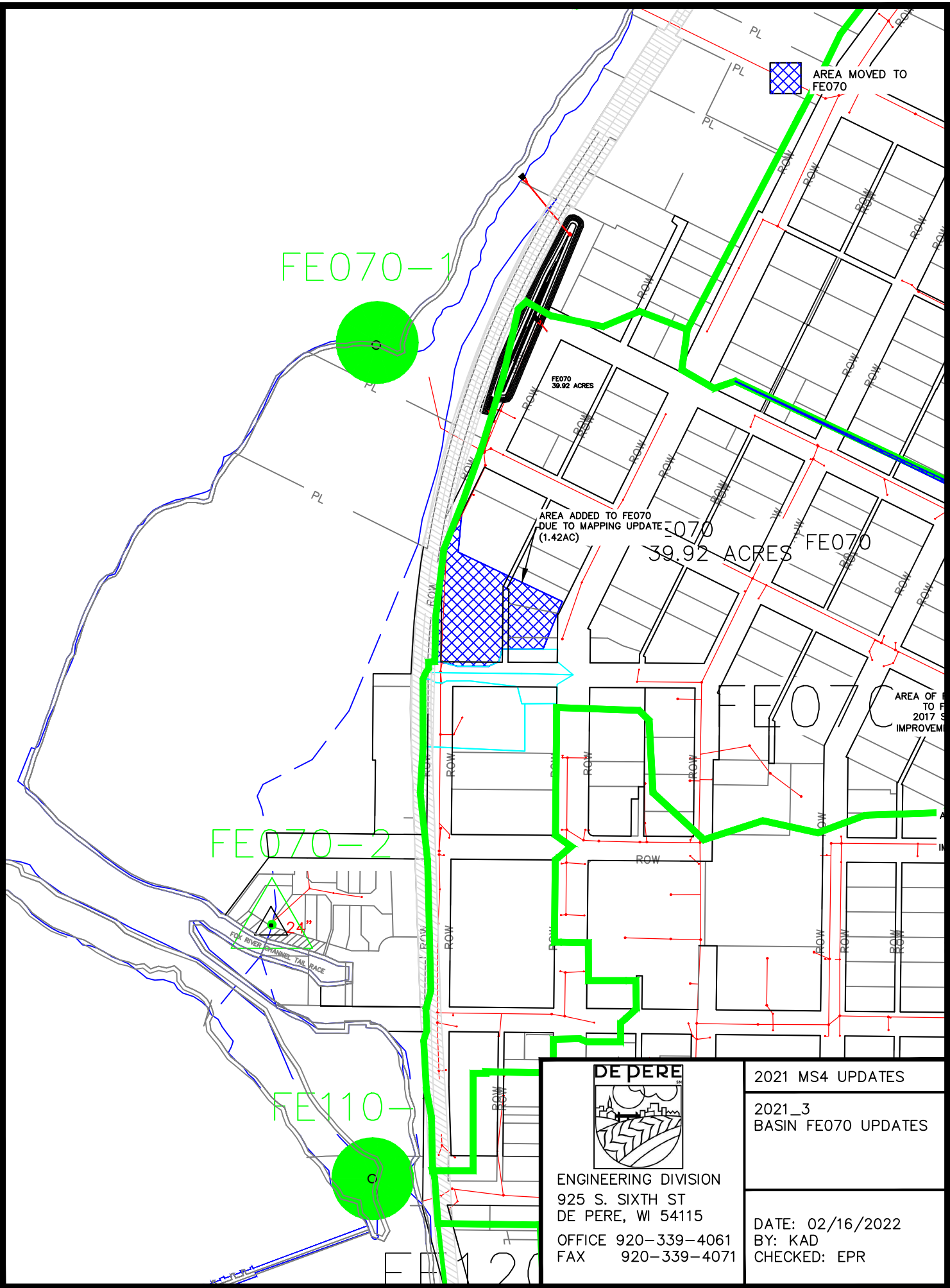


ENGINEERING DIVISION
 925 S. SIXTH ST
 DE PERE, WI 54115
 OFFICE 920-339-4061
 FAX 920-339-4071

2021 MS4 UPDATES

2021_2
 BASIN FE030, FE050,
 FE070 & FE110
 UPDATES

DATE: 02/16/2022
 BY: KAD
 CHECKED: EPR



AREA MOVED TO FE070

FE070-1

AREA ADDED TO FE070
DUE TO MAPPING UPDATE
(1.42AC)

FE070
39.92 ACRES

FE070-2

POK RIVER CHANNEL TAIL RACE

FE110-

DE PERE

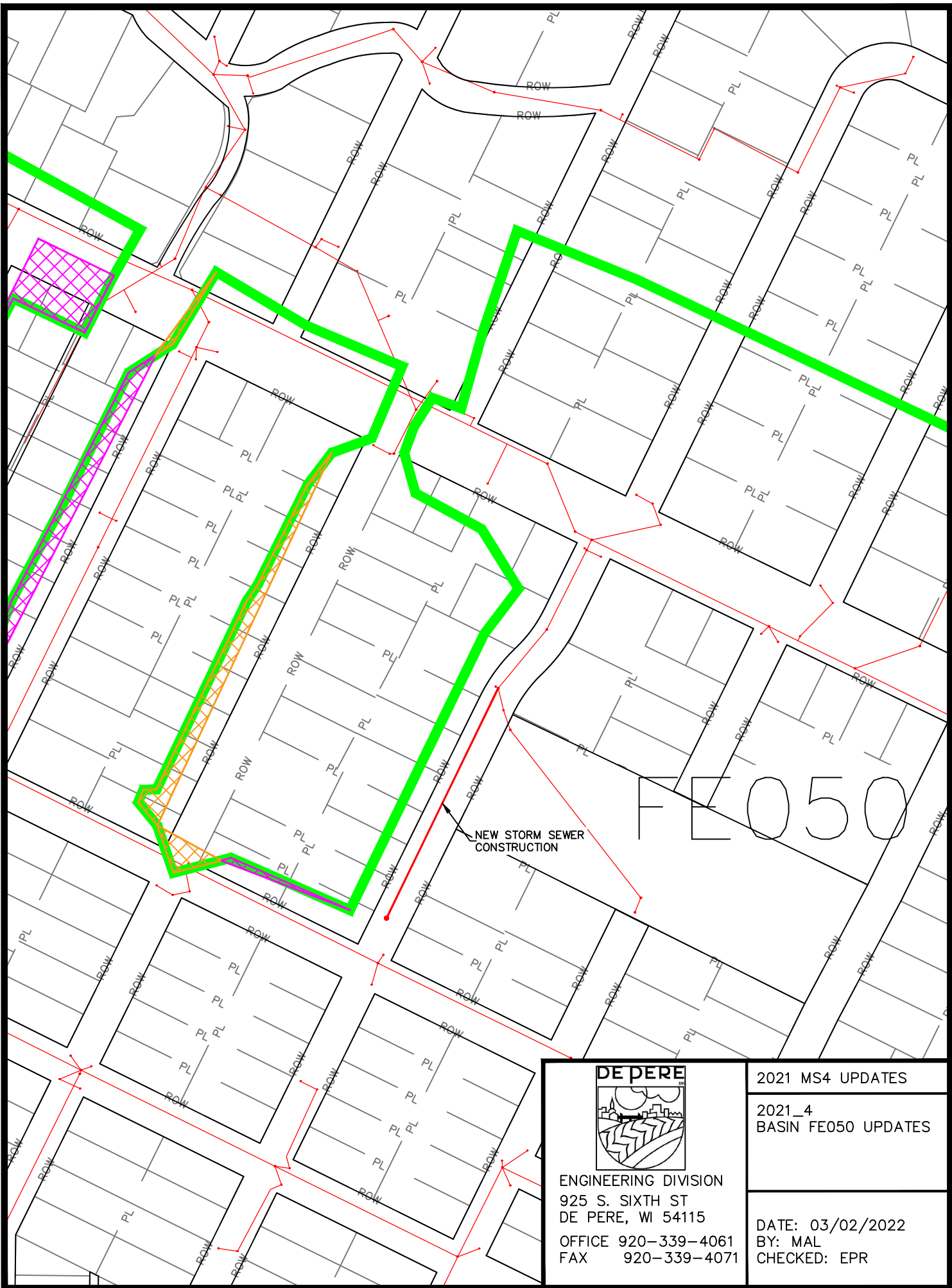


ENGINEERING DIVISION
925 S. SIXTH ST
DE PERE, WI 54115
OFFICE 920-339-4061
FAX 920-339-4071

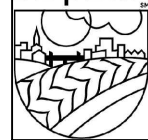
2021 MS4 UPDATES

2021_3
BASIN FE070 UPDATES

DATE: 02/16/2022
BY: KAD
CHECKED: EPR



DE PERE



ENGINEERING DIVISION
 925 S. SIXTH ST
 DE PERE, WI 54115
 OFFICE 920-339-4061
 FAX 920-339-4071

2021 MS4 UPDATES

2021_4
 BASIN FE050 UPDATES

DATE: 03/02/2022
 BY: MAL
 CHECKED: EPR